



# CHEVALLERIE

collection

SAMUEL & SONS  
TIMOTHY CORRIGAN



Shown clockwise:  
Key tassel in Vert, Bleu,  
Oro, Macaron, Bordeaux,  
Marzipan, Crème, Jardin,  
Amande, Argent and Pétale

“For more than three centuries, France has helped define what is chic in the world of design. Directly inspired by my French château, CHEVALLERIE, this beautiful collection adds richly detailed sophistication and flair to any home.”

- Timothy Corrigan

Shown below:  
Brush Fringe  
and Crete in Crème



*Timothy exhibits his aesthetic of European elegance infused with California casual in both the collection's tactile and visual elements.*

The **Double Tassel Tieback** is adorned with lavish hand tied tassel hangers overlaying a full multi-tonal skirt and is complemented by the **Key Tassel** whose mold is embellished with an ensemble of fine cords.

*Shown: Key Tassel in Bleu*



## *Timothy Corrigan*

Timothy Corrigan is considered one of the leading interior designers in the world. With offices in Los Angeles and Paris, his firm has completed projects in Europe, the Middle East and across the United States. His work has been featured in over 1,000 publications, and 25 countries. Timothy has been honored by design centers around the world, and has been named to multiple top designer lists, including the Design Icon Award, the AD100, Elle Decor-A List, Star of Design, ICAA Legacy Award, Robb Report's Top 40 Designers in the World, and the Luxe Gold List. He was the first American designer honored by the French Heritage Society for his restoration of several national landmarks in France. Timothy has designed successful licensed collections with several partners, including Schumacher, Royal Limoges, THG-Paris, Fromental, and Perennials. Timothy has two design books published by Rizzoli, the first chronicles the restoration of his chateau in France, and the second features his projects around the world.

The collection portrays exquisite complexity and craftsmanship as evidenced in the hand woven crisscross in the **Braid**, dimensional guipure **Crete**, lush **Scalloped Tassel Fringe**, and intricately applique velvet on heavy satin in the **Botanical Border**.

Chevallerie's color palette is composed of several rich traditional combinations exhibited by the mix of burgundies and rose in Bordeaux, the brilliant color and vibrant golds in Marzipan, and hues of blue combined with crisp alabaster in Bleu.



*Botanical Border in Macaron*



*Chevallerie, designed by world-renowned interior designer Timothy Corrigan, is an exquisite collection of passementerie inspired by the ornamentation of his 18<sup>th</sup> century Château de La Chevallerie, located on the northern border of France's Loire Valley.*

The interiors of the château have exquisite 18<sup>th</sup> century paneled rooms, original period marble fireplaces and parquet de Versailles wood floors. The gardens of the nearly 90 acre property were re-designed in the late 19<sup>th</sup> century by Edouard André, landscape architect of Paris' famed Tuileries Gardens and the Parc des Buttes Chaumont. With his great love of restoring and bringing back to life these relics of France's glory, Corrigan has been honored by the French Heritage Society for his extensive restoration work of numerous French national landmarks.

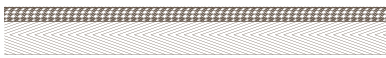


*Braid in Amande*

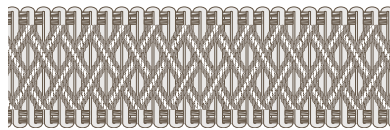


Crete in Marzipan

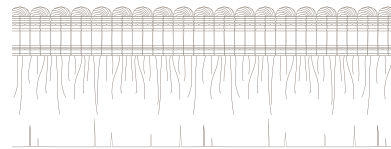
## Chevalerie Collection



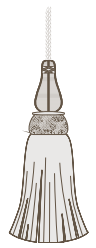
**CT-58297 3/16" (5mm)**  
Cord with Lip



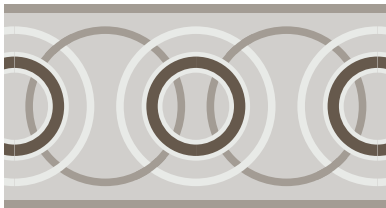
**GB-58296 1.5" (38mm)**  
Braid



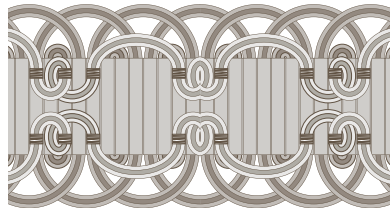
**BR-58295 1.75" (44mm)**  
Brush Fringe



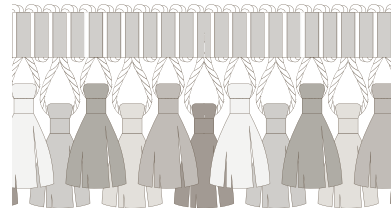
**KT-58299 5" (12.7cm)**  
Loop 4" (10cm)  
Key Tassel



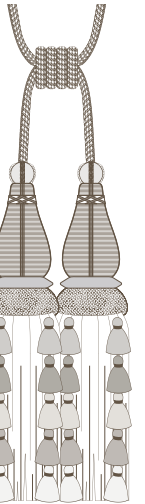
**BT-58291 2.5" (64mm)**  
Appliqué Border



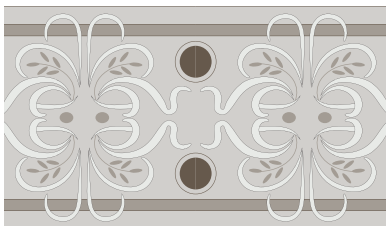
**GB-58293 2.5" (64mm)**  
Crete



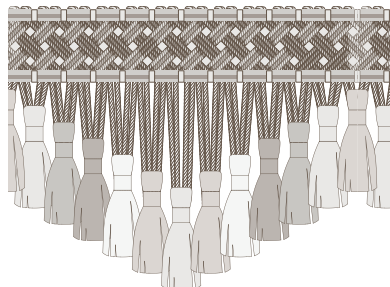
**TF-58294 2.5" (64mm)**  
Tassel Fringe



**TT-58298 13" (33cm)**  
Spread 39" (100cm)  
Double Tassel Tieback



**BT-58292 2.75" (70mm)**  
Botanical Border



**TF-58300 3.5" (89mm)**  
Scalloped Tassel Fringe

Available colors in all styles: *Pétale, Bordeaux, Macaron, Oro, Jardin, Marzipan, Argent, Crème, Bleu, Amande and Vert*

